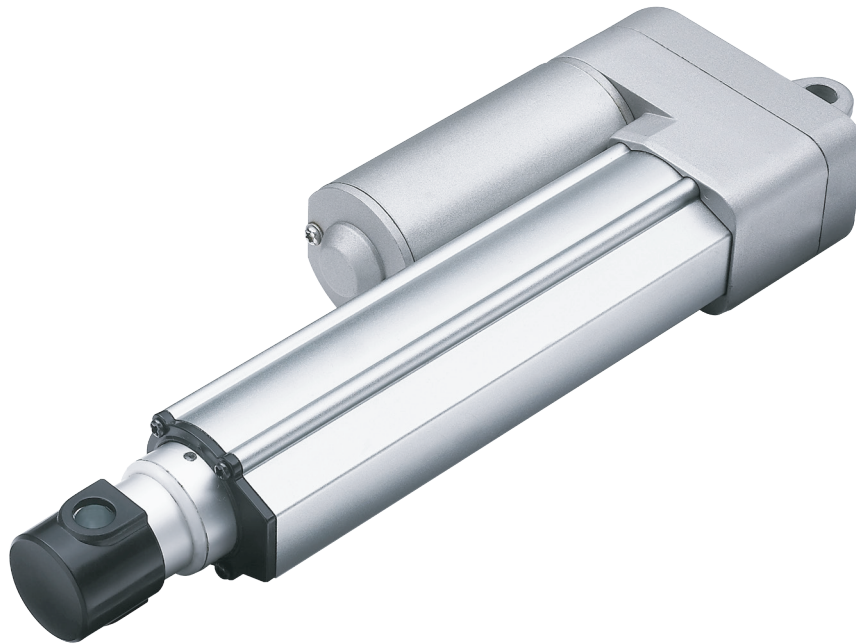


TA19

series



Product Segments

- **Comfort Motion**
- **Ergo Motion**

TecHome's TA19 series is a quiet and telescopic style linear actuator suited for height-adjustable work tables. The telescopic tube design of the TA19 linear actuator allows for a longer stroke with a shorter retracted length and reduced installation dimensions. This linear actuator can also be equipped with Hall sensors for position feedback.

General Features

Voltage of motor	12V DC or 24V DC
Maximum load	1,000N in push
Maximum speed at full load	30.0mm/s (with 800N in a push condition)
Minimum installation dimension	Stroke/2+165mm
Operational temperature range	+5°C~+45°C
Option	Hall sensors

Load and Speed

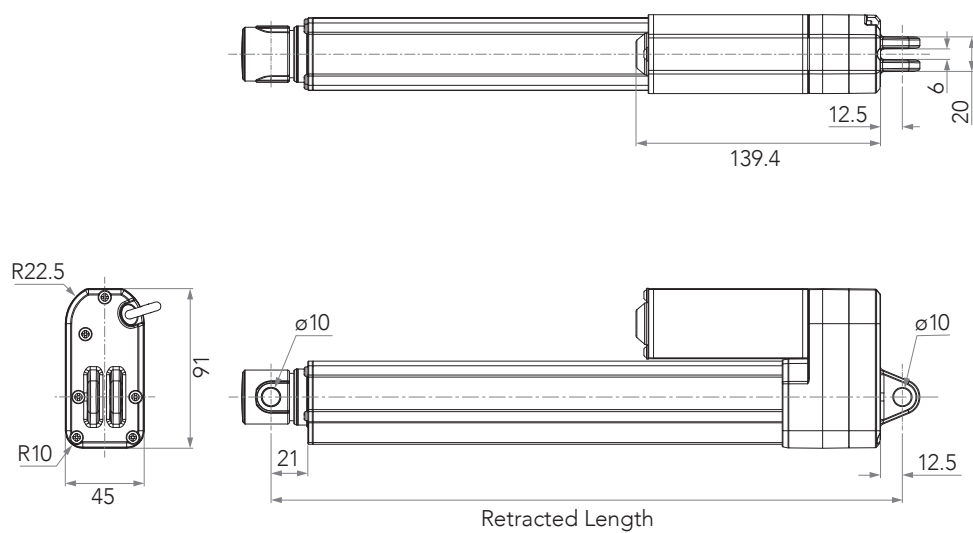
CODE	Rated Load	Self Locking N (PUSH)	Typical Current at Rated Load (A)	Typical Speed	
	PUSH N			No Load (32V DC) mm/s	Rated Load (24V DC) mm/s
Motor Speed (3800RPM)					
A	600	1000	3.2	51.0	27.0
B	1000	1000	3.5	24.0	12.0
Motor Speed (5200RPM)					
C	800	1000	6.0	64.0	30.0
D	1000	1000	5.0	32.0	18.0

Note

- TA19 is designed especially for push applications, not suitable for pull applications.

Drawing

Standard Dimensions
(mm)



Minimum Retracted Length

Stroke

180~300mm	Stroke/2+165mm
-----------	----------------

Additional Retracted Length

TA Series	Safety Stroke Limit (mm)	Additional Stroke (mm)	Additional Invalid Length (mm)
TA19	300	$0 < \text{additional stroke} \leq 50$	10

Note

- 1 Above stroke recommendation is based on safety stroke limit, for each additional 50mm stroke, it needs to add 10mm for the retracted length.

For example

- 1 If TA19's stroke is 301mm, the retracted length = 301mm+invalid length+10mm.

TA19 Ordering Key

TA19

Version: 20140605-D

<input type="checkbox"/>	Voltage	1 = 12V	2 = 24V
<input type="checkbox"/>	Load and Speed	See appendix	
<input type="checkbox"/>	Stroke (mm)		
<input type="checkbox"/>			
<input type="checkbox"/>			
<input type="checkbox"/>	Retracted Length (mm)	See appendix	
<input type="checkbox"/>			
<input type="checkbox"/>			
<input type="checkbox"/>	Rear Attachment	1 = Hole 10mm, slot 6mm	2 = Hole 8mm, slot 6mm
<input type="checkbox"/>	Front Attachment	1 =Punched hole on the tube with plastic cover on, width 32mm, hole 10mm 2 =Punched hole on the tube with plastic cover on, width 32mm, hole 8mm	A = Customized
<input type="checkbox"/>	Direction of Rear Attachment	1 = 90° Note : #2 needs an application for production	2 = 0°
<input type="checkbox"/>	IP Protection	1 = Without	
<input type="checkbox"/>	Functions for Limit Switches	1 =Two switches at the retracted/extended positions to cut current 2 =Two switches at the retracted/extended positions to cut current with the third one in between to send signal	3 =Two switches at the retracted/extended positions to send signal 4 =Two switches at the retracted/extended positions and the third one in between to send signal A = Customized
<input type="checkbox"/>	Special Functions for Spindle Sub-Assembly	0 = Without (standard)	
<input type="checkbox"/>	Output Signals	0 = Without	5 = Two Hall sensors
<input type="checkbox"/>	Plug	1 = TecHome's standard 6pin plug 2 = Tinned leads	E = Molex 8pin A = Customized
<input type="checkbox"/>	Cable Length	0 =Straight, 100mm 1 =Straight, 500mm 2 =Straight, 750mm	3 =Straight, 1000mm 4 =Straight, 1250mm 5 =Straight, 1500mm 6 =Straight, 2000mm 7 =Coiled, 200mm 8 =Coiled, 400mm A = Customized

Terms of Use

The user is responsible for determining the suitability of TecHome products for a specific application. TecHome products are subject to change without prior notice.