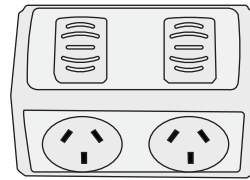


TH892 Remote Controlled Power Points

How to Learn/Delete Remotes



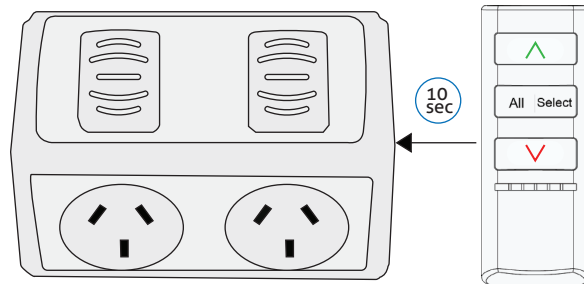
What you need



Deleting Remotes

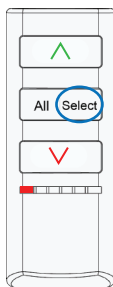
1. Hold the back of the remote to the right hand side of the power point 10 seconds.

2. The powerpoint will have a continuous tone then beep 4 times to indicate completion of deletion.

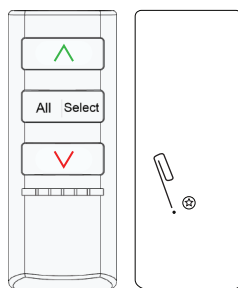


Pairing First Remote to the Power Point

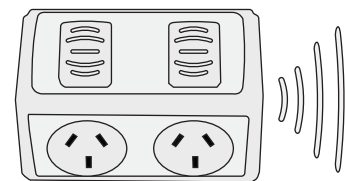
1. Select Channel 1 on the remote by using the select button.



2. Insert a paperclip into the reset hole on the back of the remote (Next to the screw)

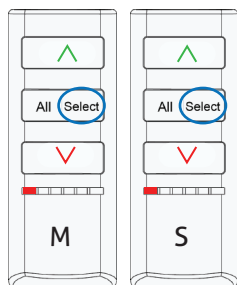


3. The Power Point will beep four (4) times to indicate successful pairing.

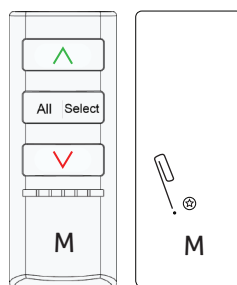


Adding a Second Remote to the Power Point

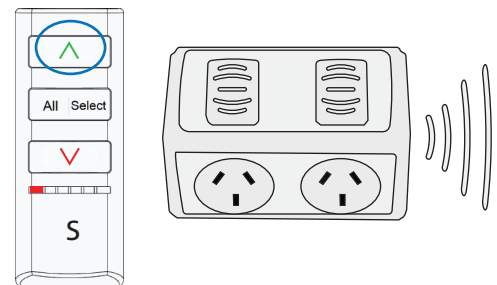
1. Select channel 1 by pressing "Select" on both the master and secondary remotes.



2. Insert a paper clip pin into the reset hole at the back of the master remote.



3. The power point will begin to beep. Press the 'ON' (^) button on the second remote.



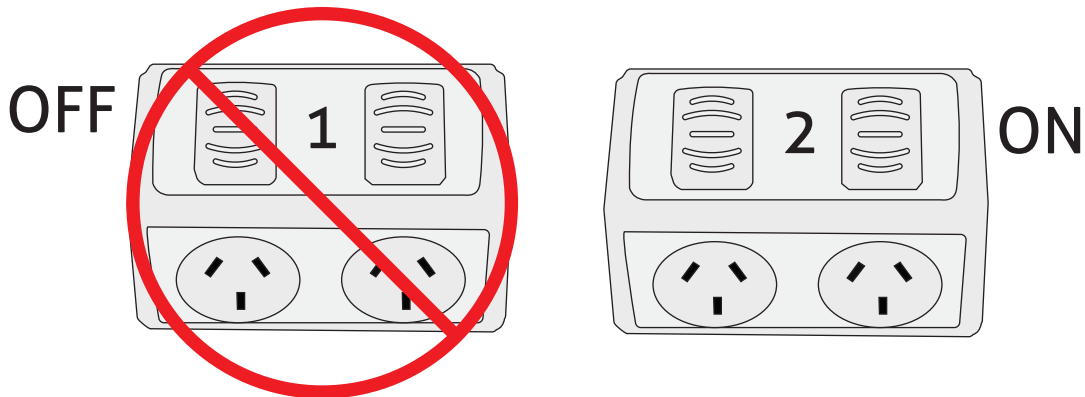
4. The Power Point will beep four (4) times to indicate successful pairing.

M = Master Controller (already Paired)
S = Second Remote (to be paired)

Pairing Two Power Points to One Remote (DIY Points only)

1. Ensure the remote is already learned to power point 1 (see page 1 - "Pairing First Remote")

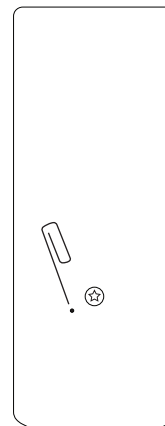
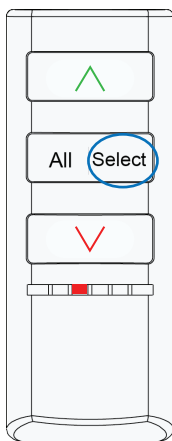
2. Isolate power point 1 by cutting the power from the mains (or disconnecting from the wall).



3. Delete the remote from power point 2 (see page 1 - "Deleting Remotes")

4. Select Channel 3 on the remote by using the "select" button.

5. Insert a paper clip pin into the reset hole at the back of the remote.



6. The Power Point will beep four (4) times to indicate successful pairing.

7. Turn on power point 1 and check that both power points are operating

