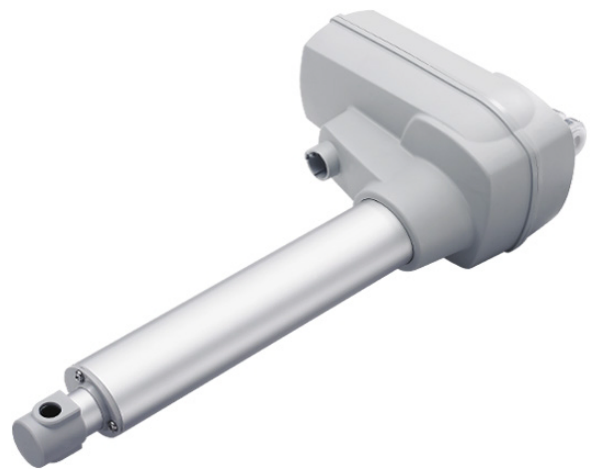


TA24

Series



Product Segments

Care Motion
Industrial Motion

TA24 Series

TecHome's TA24 series linear actuator is designed primarily, up to 1000Kg patient lifts. This application requires a linear actuator whose design is focused on safety, reliability and effortless operation. A significant feature of the TA24 is the manual release function that allows for lowering of the patient in the event of an emergency or electrical power outage. The TA24 linear actuator is available with an optional IP66 or IP66W rating.

General Features

Voltage of motor	24 or 36V DC
Maximum load	10,000N in push
Maximum load 6,000N in pull	
Maximum speed at full load	8.0mm/s (with 6,000N in a push or pull condition)
Minimum installation dimension	Stroke+190mm
Minimum installation dimension	Stroke+267mm (for patient hoist)
Color	Black or grey
IP rating	Up to IP66W
Certificate	EN60601-1 compliant
Operational temperature range	+5°C~+45°C
Options	Safety nut, Hall/POT sensor(s), manual release for patient hoist applications

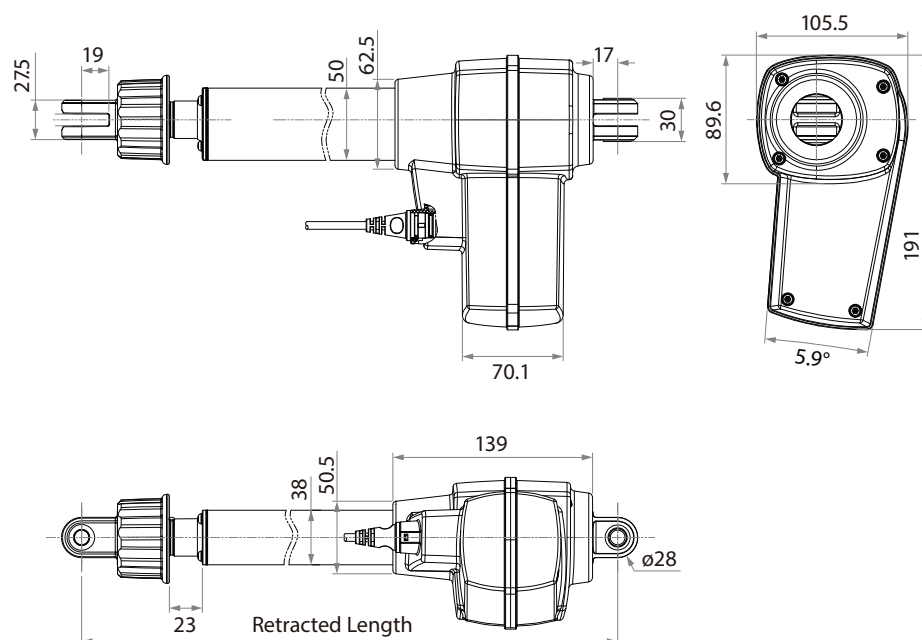


MOTION AND AUTOMATION

P: 07 3297 9797 A: 33 Perrin Drive, Underwood, QLD, 4119, Australia E: info@techome.com.au W: www.techome.com.au

Drawing

Standard Dimensions
(mm)



Load and Speed

CODE	Rated Load		Self Locking Force (N)	Typical Current (A)		Typical Speed (mm/s)	
	PUSH N	PULL N		No Load 32V DC	With Load 24V DC	No Load 32V DC	With Load 24V DC
Motor Speed (4200RPM, Long motor)							
B	6000	6000	6000	1.5	6.0	13.9	8.0
C	8000	6000	8000	1.5	9.0	11.9	6.4
D	10000	6000	10000	1.5	9.8	10.3	5.4

Note

- 1 With a 36V motor, the current is approximately two-thirds the current measured in 24V; speed will be similar for both voltages.
- 2 Above self lock performance needs working with Timotion control system in push direction.