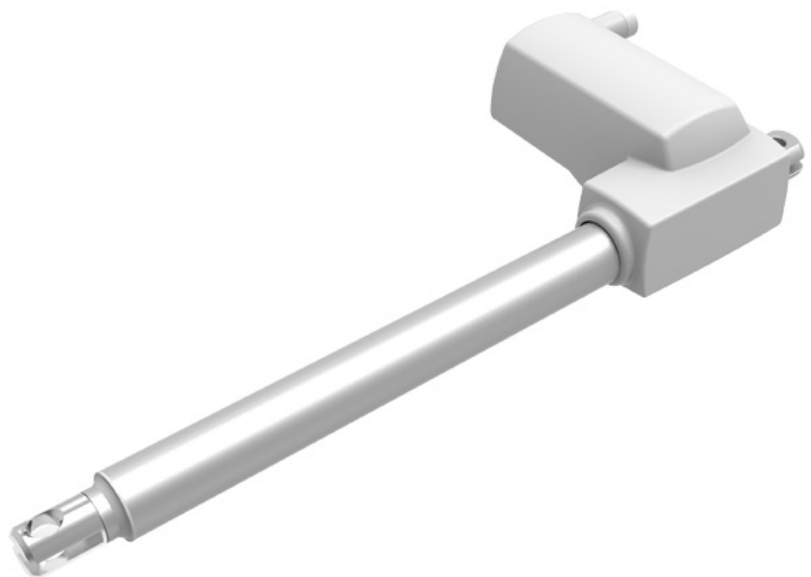


# TA11

Series



## Product Segments

Care Motion

### TA11 Series

TecHome's TA11 series linear actuator is primarily used in the medical market. This actuator series is suitable for bathroom chair applications. Its compact design supports load ratings up to 1,500N.

### General Features

<b>Voltage of motor</b>	12V DC or 24V DC
<b>Maximum load</b>	1,500N in push/pull
<b>Maximum speed at full load</b>	10.5mm/s (with 1,500N in a push condition)
<b>Minimum installation dimension</b>	Stroke+155mm
<b>Color</b>	Grey
<b>IP rating</b>	Up to IP66
<b>Option</b>	Hall sensor(s)

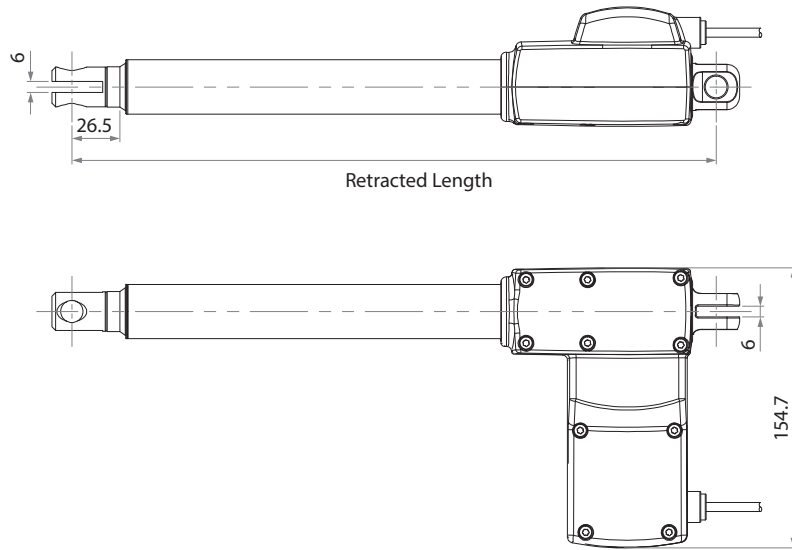


MOTION AND AUTOMATION

P: 07 3297 9797 A: 33 Perrin Drive, Underwood, QLD, 4119, Australia E: [info@techome.com.au](mailto:info@techome.com.au) W: [www.techome.com.au](http://www.techome.com.au)

Drawing

Standard Dimensions  
(mm)



Load and Speed

CODE	Rated Load		Self Locking N (PUSH)	Typical Current at Rated Load (A)	Typical Speed	
	PUSH N	PULL N			No Load (24V DC) mm/s	Rated Load (24V DC) mm/s
Motor Speed (5200RPM)						
A	1500	1500	1500	3.0	18.2	10.5

Note

- 1 The above are the speed and current figures under pushing condition.
- 2 Speed would be the same if with 12V motor, but with double current consumption comparing 24V motor.