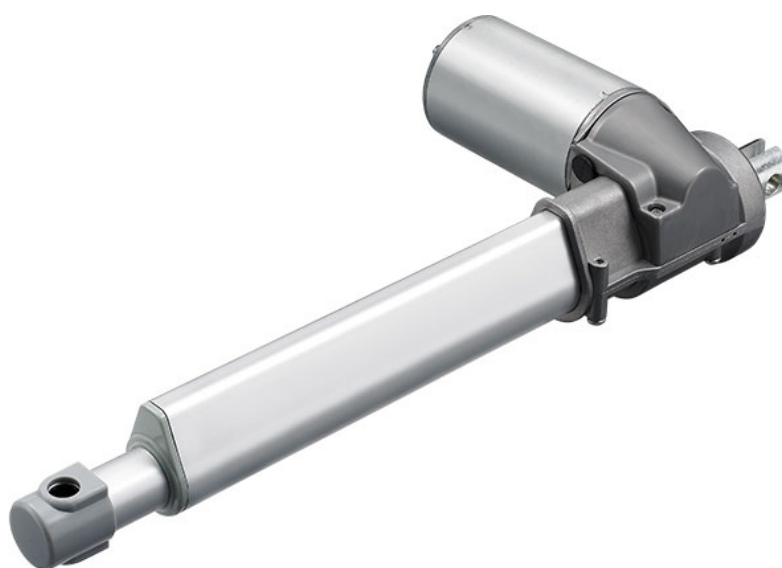


TA13

Series



Product Segments

Care Motion

TA13 Series

TechHome's TA13 series linear actuator is designed primarily for dental chairs requiring high-push load solutions, but can also be applied to a wide range of other applications. Positional feedback and manual operation in the event of a power loss are optional features for the TA13 linear actuator. Certificates for the TA13 include EN60601-1.

General Features

Voltage of motor	24V DC or 36V DC
Maximum load	8,000N in push
Maximum load	4,000N in pull
Maximum speed at full load	32.2mm/s (with 1,500N in a push condition)
Minimum installation dimension	stroke+180mm
Color	black or grey
Certificate	IEC 60601-1 and ES 60601-1
Operational temperature range	+5°C~+45°C
Option	Hall sensor(s), push only

Suitable for dentist chair application

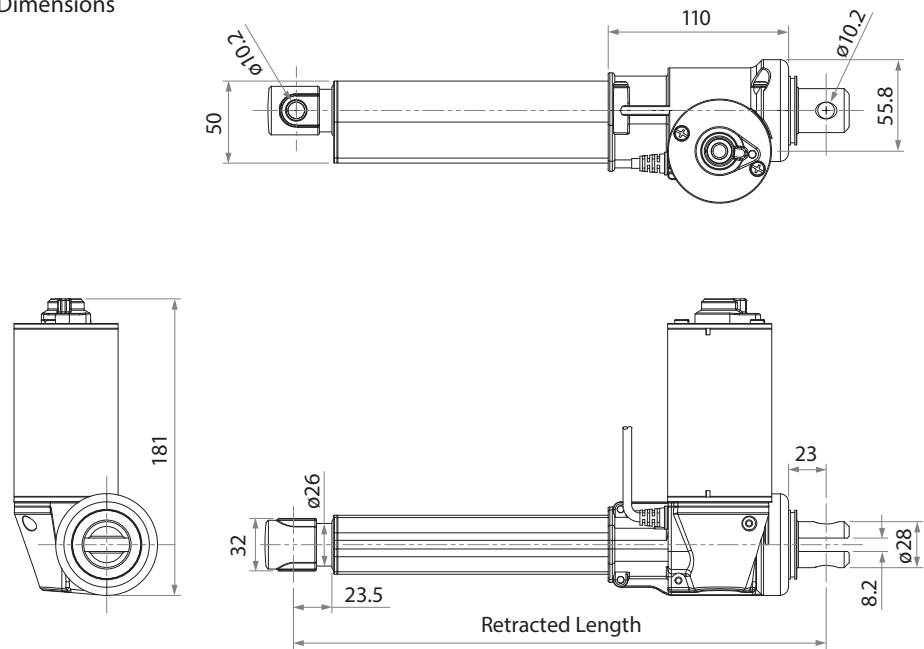


MOTION AND AUTOMATION

P: 07 3297 9797 A: 33 Perrin Drive, Underwood, QLD, 4119, Australia E: info@techhome.com.au W: www.techhome.com.au

Drawing

Standard Dimensions
(mm)



Load and Speed

CODE	Load (N)		Self Locking Push (N)	Typical Current (A)		Typical Speed (mm/s)	
	Push	Pull		No Load 32V DC	With Load 24V DC	No Load 32V DC	With Load 24V DC
Motor Speed (3000RPM, Duty cycle 10%)							
T	8000	4000	8000	2.5	6.0	7.9	4.4
Motor Speed (3800RPM, Duty cycle 10%)							
B	10000	4000	10000	2.5	8.5	8.0	4.5
C	8000	4000	8000	2.5	8.5	10.7	6.0
D	5500	5500	5500	2.5	8.0	14.4	8.1
E	3000	3000	3000	3.0	7.0	25.8	15.7
F	1500	1500	1500	2.5	6.5	49.4	32.2

Note

- 1 With a 36V motor, the current is approximately two-thirds the current measured in 24V; speed will be similar for both voltages.
- 2 Self locking force: Tested average value when working with TecHome control system in push direction.
- 3 Current and speed: Tested average value when stretching in push direction.
- 4 Work Temperature: +5°C~+45°C.
- 5 Standard stroke: min needs ≥ 30mm, Max refer to below table.

Load and Speed Code	Load (N)	Max. Stroke (mm)
B	10000	700
T / C	8000	750
D	5500	800
E	3000	900
F	1500	1000