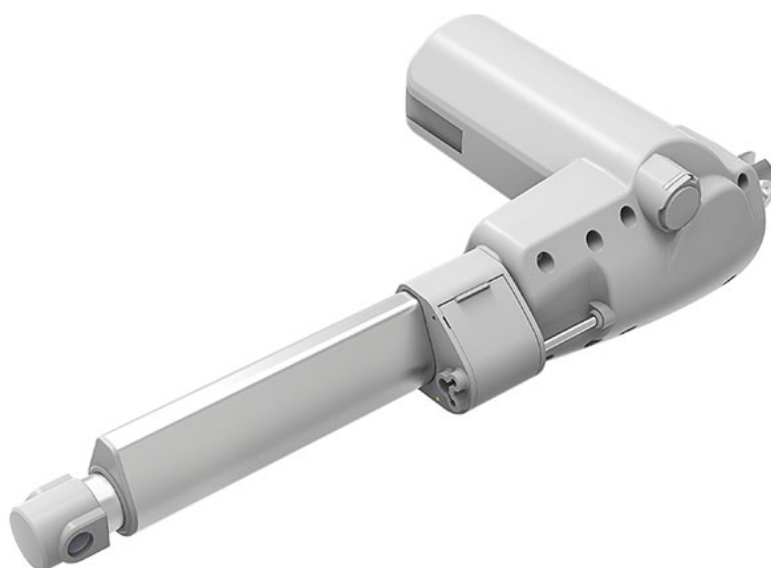


TA15

Series



Product Segments

Care Motion

TA15 Series

TecHome's TA15 series linear actuator was specifically designed for bariatric bed applications. These beds require a robust, long life solution that incorporates safety, reliability and effortless operation. A significant feature of the TA15 linear actuator is the manual release function that allows for lowering of the patient in the event of an emergency or electrical power outage.

General Features

Voltage of motor	24V DC or 36V DC
Maximum load	10,000N in push
Maximum load	5,500N in pull
Maximum speed at full load	32.2mm/s (with 1.500N in a push condition)
Minimum installation dimension	stroke+210mm
Color	black or grey
IP rating	Up to IP66W
Operational Temperature range	+5°C~+45°C

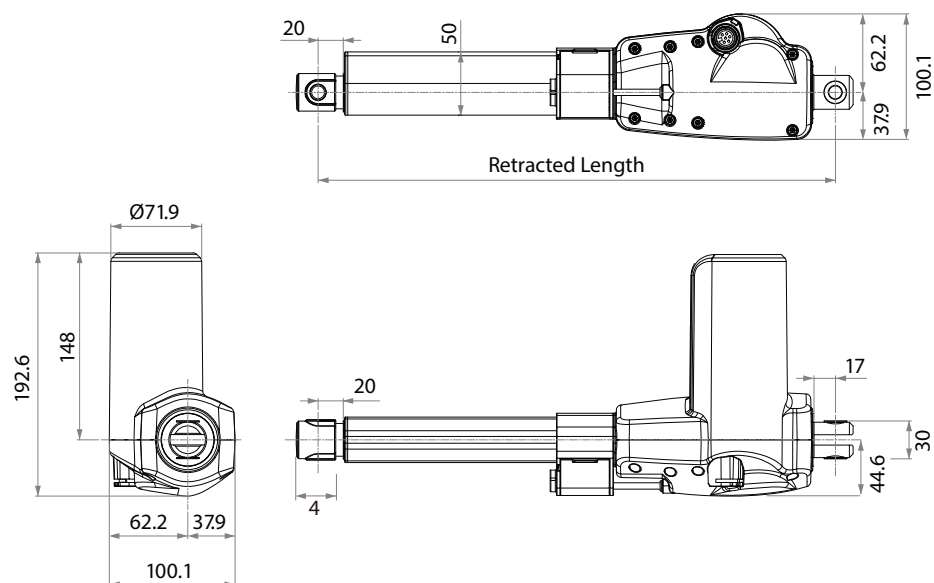


MOTION AND AUTOMATION

P: 07 3297 9797 A: 33 Perrin Drive, Underwood, QLD, 4119, Australia E: info@techome.com.au W: www.techome.com.au

Drawing

Standard Dimension (mm)



Load and Speed

CODE	Load (N)		Self Locking Push (N)	Typical Current (A)		Typical Speed (mm/s)	
	Push	Pull		No Load 32V DC	With Load 24V DC	No Load 32V DC	With Load 24V DC
Motor Speed (3000RPM, Duty cycle 10%)							
T	8000	4000	8000	2.5	6.0	7.9	4.4
Motor Speed (3800RPM, Duty cycle 10%)							
B	10000	4000	10000	2.5	8.5	8.0	4.5
C	8000	4000	8000	2.5	8.5	10.7	6.0
D	5500	5500	5500	2.5	8.0	14.4	8.1
F	1500	1500	1500	2.5	6.5	49.4	32.2

Note

- 1 With a 36V motor, the current is approximately two-thirds the current measured in 24V; speed will be similar for both voltages.
- 2 This self-locking force level is reached only when a short circuit is applied on the terminals of the motor. All the TecHome control boxes have this feature built-in.
- 3 Current and speed: Tested average value when stretching in push direction
- 4 Operational temperature range: +5 °C ~ +45 °C
- 5 Standard Stroke: min≥30mm, max stroke is as following

Code	Load (N)	Max Stroke (mm)
B	10000	500
T/C	8000	500
D	5500	800
F	1500	1000