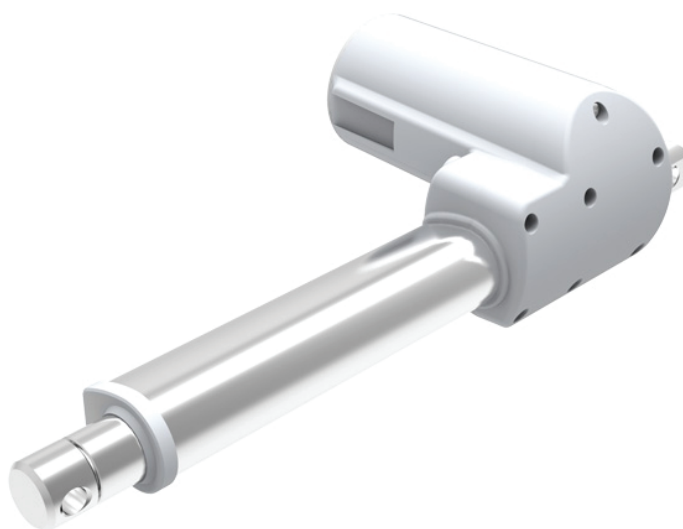


TA23

Series



Product Segments

Care Motion

TA23 Series

TecHome's TA23 series is a compact linear actuator primarily used for medical applications that require high force and high speed. This linear actuator also has the ability to save installation space by mounting the control box to the actuator. The TA23 linear actuator is available with an optional IP54 or 66 rating and Hall sensors for position feedback.

General Features

Voltage of motor	12V DC, 24V DC, 36V DC,
Maximum load	10,000N in push
Maximum load	4,000N in pull
Maximum speed	23.4mm/s (with 1,000N in a push or pull condition)
Minimum installation dimension	Stroke+ 163mm
Certificate	IEN60601-1 and RoHS compliant

An economical solution with compact installation dimension

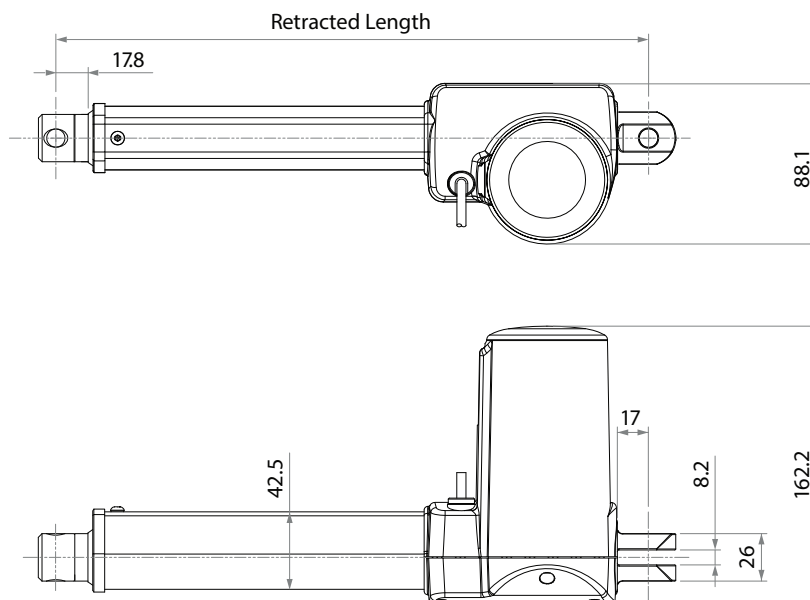


MOTION AND AUTOMATION

P: 07 3297 9797 A: 33 Perrin Drive, Underwood, QLD, 4119, Australia E: info@techome.com.au W: www.techome.com.au

Drawing

Standard Dimensions (mm)



Load and Speed

CODE	Rated Load		Self Locking N (PUSH)	Typical Current at Rated Load (A)	Typical Speed	
	PUSH N	PULL N			No Load (32V DC) mm/s	Rated Load (24V DC) mm/s
Motor Speed (2600RPM)						
C	5000	4000	2500	3.6	8.0	4.1
D	6000	4000	4000	3.6	6.0	3.1
F	2500	2500	1500	3.3	15.9	8.3
G	2000	2000	1000	3.3	21.4	11.1
H	1000	1000	500	2.2	32.1	19.1
J	3500	3500	2500	3.7	11.9	6.0
K	8000	4000	5000	4.1	5.4	2.7
Motor Speed (3400RPM)						
L	6000	4000	4000	4.3	7.6	4.1
N	2500	2500	1500	4.2	20.2	11.1
O	2000	2000	1000	4.1	27.1	14.9
P	1000	1000	500	3.1	39.5	23.4
Q	3500	3500	2500	4.7	15.1	7.9
R	8000	4000	5000	5.1	6.8	3.5
T	5000	4000	2500	4.3	10.1	5.4
Motor Speed (3800RPM)						
Y	8000	4000	5000	5.4	7.7	4.4
B	10000	4000	10000	5.3	5.7	3.3
U	5000	4000	2500	4.6	11.4	6.6
W	2500	2500	1500	4.4	22.9	13.1
Z	3500	3500	2500	4.9	17.1	9.5

Note

- 1 Motor 12V current is around 2 times in 24V; Motor 36V current is around 2/3 in 24V; speed is around the same.
- 2 Above self lock performance needs working with TecHome control system.