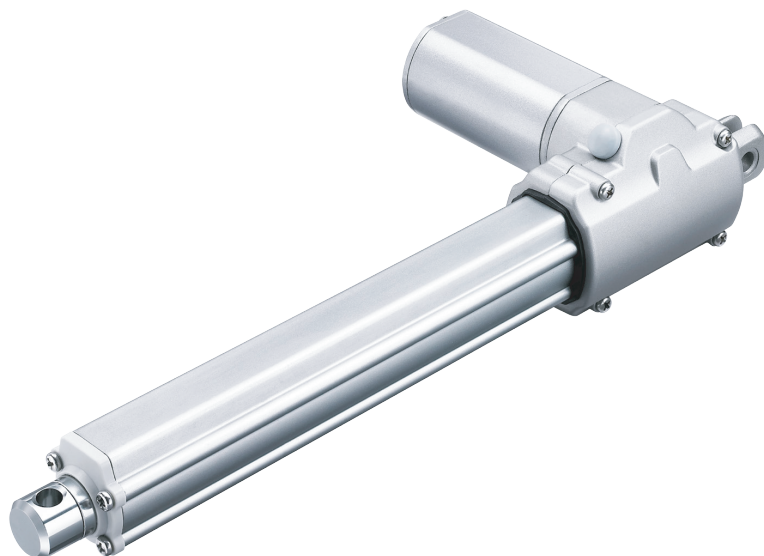


# TA4

Series



## Product Segments

Comfort Motion  
Industrial Motion

## TA4 Series

TA4 series is a compact, quiet and powerful actuator designed to fit an area specifically requiring a right angle motor versus tube configuration. The success of this design makes this actuator a perfect fit for a wide range of applications including computer carts, industrial work surfaces, office desks etc.

## General Features

Voltage of motor	12V DC, 24V DC
Maximum load	3,500N in push
Maximum speed	2,000N in pull
Maximum speed at no load	40.0mm/s
Maximum speed at full load	17.0mm/s
Minimum installation dimension	Stroke+ 140mm
Colour	Silver
Protection Class	IP54 or IP66
Certificate	EN/UL 60601-1 and RoHS
Operational temperature range:	+5°C~+45°C
Option	Hall sensor(s)
Low noise.	

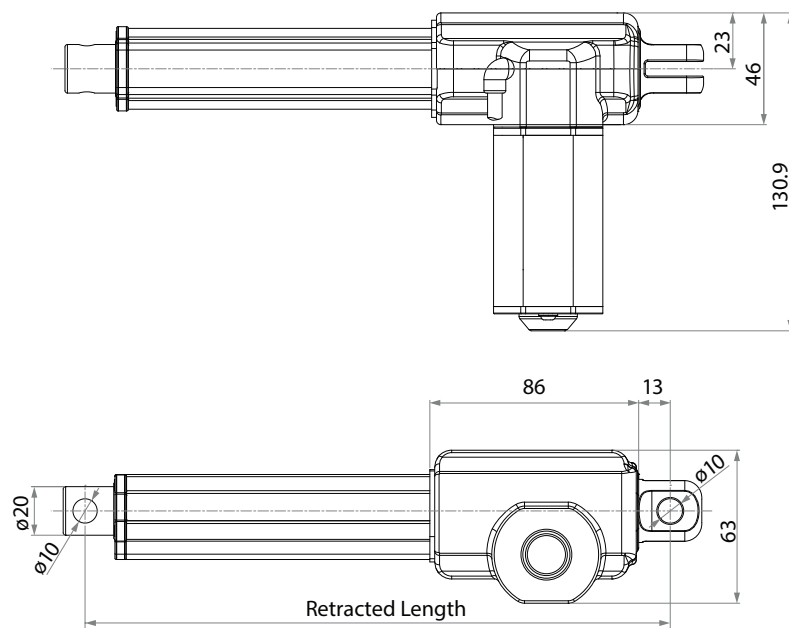


## MOTION AND AUTOMATION

P: 07 3297 9797 A: 33 Perrin Drive, Underwood, QLD, 4119, Australia E: [info@techome.com.au](mailto:info@techome.com.au) W: [www.techome.com.au](http://www.techome.com.au)

## Drawing

### Standard Dimensions (mm)



### Load and Speed

CODE	Rated Load		Self Locking N (PUSH)	Typical Current at Rated Load (A)	Typical Speed	
	PUSH N	PULL N			No Load (32V DC) mm/s	Rated Load (24V DC) mm/s
Motor Speed (4100RPM)						
A	2000	2000	1500	2.8	10.0	4.8
B	1500	1500	800	2.8	14.0	6.0
C	1000	1000	300	3.2	27.0	11.0
D	800	800	200	3.2	40.0	17.0
E	3500	2000	3500	3.2	6.5	3.0
Motor Speed (3800RPM)						
G	2500	2000	2500	2.8	9.3	5.2
H	2000	2000	1000	3.0	13.2	6.9
I	1500	1500	500	4.0	26.4	10.8
J	3500	2000	3500	3.2	5.8	2.8
Motor Speed (3300RPM)						
M	1500	1500	1500	1.8	7.9	3.8
N	1000	1000	800	1.8	11.2	6.1
O	500	500	300	1.8	23.1	14.5
Motor Speed (2200RPM)						
R	1500	1500	1000	1.5	7.8	3.7
S	1000	1000	500	1.5	15.2	6.6
T	800	800	200	1.7	21.5	9.2

### Note

- The left diagram shows the speed and current figures under pushing condition.
- Speed would be the same if with 12V motor, but with double current consumption.
- The self locking force above need to work with TecHome control system.