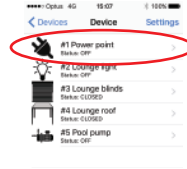


THE HUB APPLICATION (BTE/BT MODELS ONLY)

1. Download TechHome "TheHub" from the 'Google Play' or 'Apple Store'.



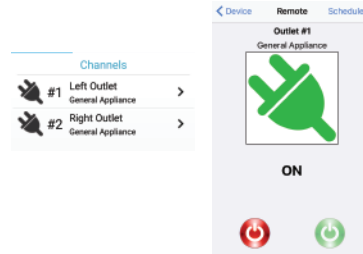
2. Select "Power Point" in Devices



3. Enter your PIN or the default PIN "0001"

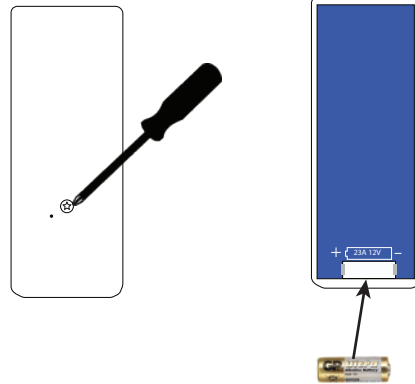


4. Select the outlet you want to control



BATTERY REPLACEMENT FOR REMOTE

1. On the back of the remote control remove the screw using a small Phillips screwdriver.
2. Loosen the back by inserting the flat screw drive between the seams on both sides, top, middle and bottom.
3. Gently remove the back cover. Replace the battery with a GP23A 12V battery.



Warranty:

Proof of Purchase: This warranty is only valid to the original purchaser and is not transferable. Please keep your receipt for warranty purposes, please present your receipt when claiming warranty as proof of purchase date.

Warranty: This product is warranted to be free from any defects for a period of 12 months (one year) from the date of purchase, any defects that may occur will be repaired or replaced.

Warranty Procedure: Please return the faulty product with the valid proof of purchase to the original place of purchase. The customer is responsible for freight, postage and packing costs when claiming warranty.

Exclusions: This warranty does not cover: batteries, misuse, packaging, general wear and tear, power surges, lightning strikes, floods, incorrect installation, damage due to lack of care, modifications or repair by an unauthorised person.

Maintenance: If the power supply cord is damaged, it must be replaced by the manufacturer and/or its service agent or similar qualified person.



REMOTE CONTROL POWER POINT TH892 (BT, BTE, E, DIY)



INSTALLATION AND INSTRUCTION MANUAL

WARNING: The TH892-E/BTE must only be installed by a licenced electrician!

ELECTRICIAN INSTALLED SERIES

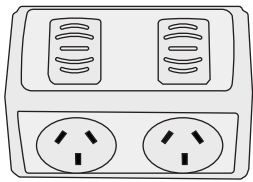
TH892-E: Power Point & Remote Controller Only
TH892-BTE: Bluetooth enabled Power Point and Remote Control

DIY INSTALLED SERIES

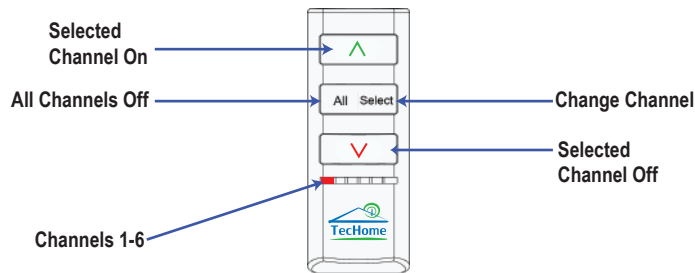
TH892: Power Point & Remote Controller Only
TH892-BT: Bluetooth enabled Power Point and Remote Control

INSTALLATION

WARNING: The TH892-E/BTE must only be installed by a licenced electrician.
Do not exceed 10AMP total. Allow 600mm clearing from the ground or wet surface



THE REMOTE

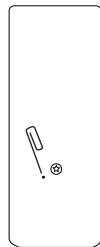


ADDING A FIRST REMOTE

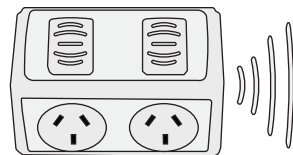
1. Select Channel 1 on the remote by using the select button.



2. Insert a paperclip into the learn hole on the back of the remote (Next to the screw)

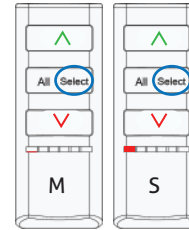


3. The Power Point will beep four (4) times to indicate successful pairing.

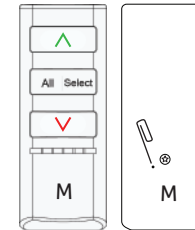


ADDING A SECOND REMOTE TO THE POWER POINT

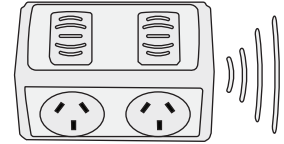
1. Select channel 1 by pressing "Select" on both the master and secondary remotes.



2. Insert a paper clip pin into the reset hole at the back of the master remote.



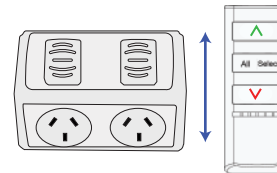
3. The power point will begin to beep. Press the 'ON' (^) button on the second remote.



4. The Power Point will beep four (4) times to indicate successful pairing.

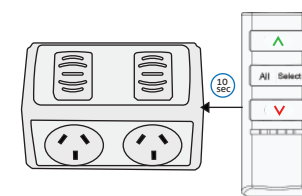
M = Master Controller (already Paired)
S = Second Remote (to be paired)

ALL ON/OFF FUNCTION



Swipe BACK of remote to the right-hand side of the Power Point to turn ON or OFF both Power Points

DELETE ALL REMOTES



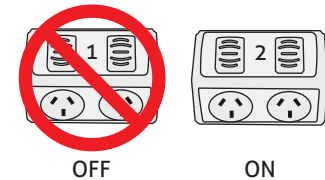
1. Hold the back of the remote to the right hand side of the power point 10 seconds.

2. The powerpoint will have a continuous tone then beep 4 times to indicate completion of deletion.

PAIRING TWO POWERPOINTS TO ONE REMOTE

1. Ensure the remote is already learned to power point 1 and all remotes have been deleted from power point 2.

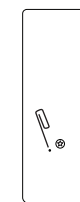
2. Isolate power point 1 by cutting the power from the mains (or disconnecting from the wall).



3. Select Channel 3 on the remote by using the "select" button.



4. Insert a paper clip pin into the reset hole at the back of the remote.



5. The Power Point will beep four (4) times to indicate successful pairing.

