

ANT-52

ANT52

The Antuator range is TecHome's slimmest and attractive set of actuators. The ANT52 is a 52mm in diameter actuator, perfect for hatches and windows that require up to 600kg pushing power.



General Features

Voltage of motor	12V DC, 24V DC
Diameter	52mm
Maximum load	600kg in push (12v = 500kg)
Maximum load	600kg in pull (12v = 500kg)
Maximum speed	88.0mm/s
Max Stroke Length	500mm

**CALL US NOW ON:
+61 (0)7 3297 9797**

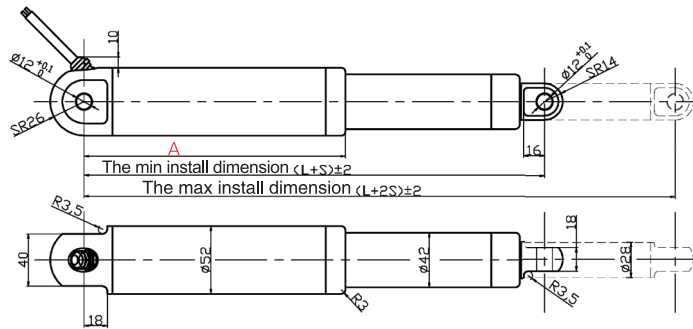


MOTION AND AUTOMATION

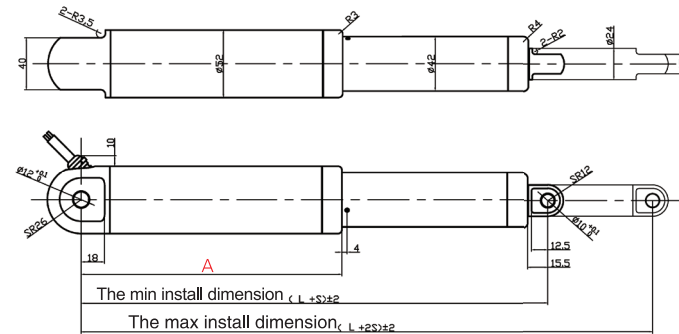
P: +61 (0)7 3297 9797

E: info@techome.com.au W: www.techome.com.au

DATA SHEET 1



Standard dimensions of ANT52



Dimensions of ANT52 with adjustable limit switch

Voltage(V)	12 24	No-load current(A)	≤ 1.6 ≤ 0.8	Load current(A)	≤ 10 ≤ 5
Max. Power(W)	150	Material of outer tube	6063 Aluminium	Material of lead screw	Trapezoid, Steel
Material of piston rod	304 stainless steel	Material of the nut	Plastic	Working duty(S2)	Work 2 minutes and rest 18 minutes
Life time(cycles)	10k	Protection Class	IP66	Noise on load (dB)	75
Operating temperature(°C)	-20~60	Storage temperature(°C)	-40~70	Certification	CE
Backlash (mm)	0.5-1	Colour	Black	Wire length(m)	1.5
Wire connection	Bare wire 4 pins connector 6 pins connector	End mounting	O type		

ANT-52[mm]	[mm]	Limit switch	Hall sensor	Over current protection
Min. Install dimension	L+S	305+S	325+S	325+S
	A	201	221	221

DATA SHEET 2

ANT-52 Technical data

Max load(N)	300	1200	1800	3000	4500	5000	6000
Self-locking force(N)	600	2400	3600	6000	8000	7500	8000
No-load speed(mm/s)	88	24	16	9.6	6.4	4.8	4.8
Load speed(mm/s)	55	15	10	6	4	3	3

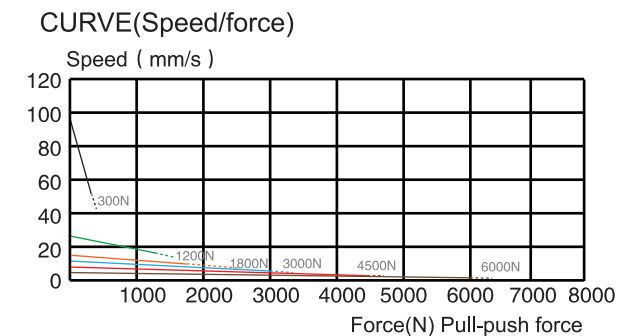
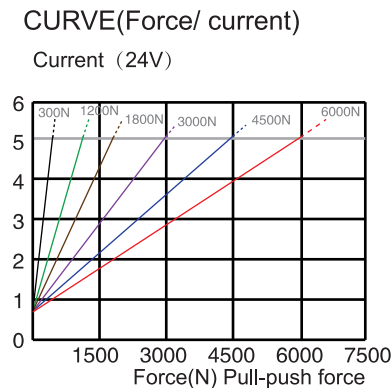
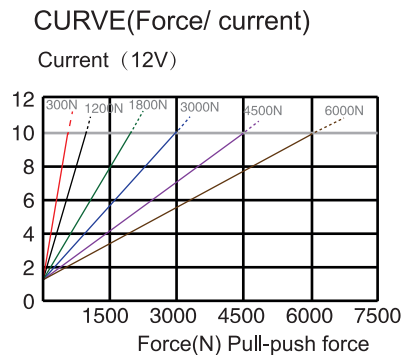
ANT-52:the max load is 5000N with the voltage of 12V

Standard stroke									Special stroke
Stroke(mm)	50	100	150	200	250	300	350	400	Customized
Weight (kg)	1.8	1.9	2	2.1	2.2	2.3	2.4	2.5	

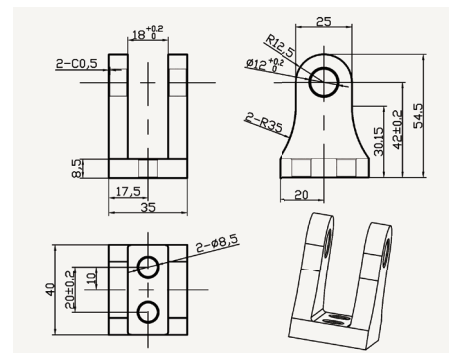
The min stroke:10mm
The max stroke:500mm
Precision:±2 mm

ANT-52 CURVE

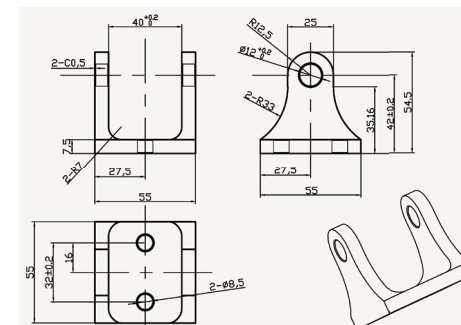
Accuracy of speed or current : ±10%, in general, applications in the dashed are not recommended.



ANT-52 Mounting Bracket



52F
Front mount bracket



52R
End mount bracket

ORDER KEY



① ANT - ② □ □ - ③ □ - ④ □ - ⑤ □ □ - ⑥ □ □ □ □ - ⑦ □ □ - ⑧ □ □ □ / ⑨ □ □ □ - ⑩ □ - ⑪ □ - ⑫ □

- ① **Brand**: ANT=ANTUATOR
- ② **Diameter**: 16=16mm; 26=26mm; 35=35mm; 38=38mm; 45=45mm; 52=52mm
- ③ **Out tube material**: S=powder coated steel; AL=aluminum; S/S=stainless steel
- ④ **Options**: L=low noise, N=Normal
- ⑤ **Input voltage**: 12=12VDC; 24=24VDC
- ⑥ **Max Load**: XXXX=N (See Data Sheet 2)
- ⑦ **Load speed**: XX=mm/s (See Data Sheet 2)
- ⑧ **Stroke**: XXXmm (See Data Sheet 2)
- ⑨ **Min. Install dimension**: XXXmm (See Data Sheet 1)
- ⑩ **Color**: B=Black; S=Silver; C=Customized
- ⑪ **Optional functions**: C=over current protection; H=hall sensor; LS=limit switch; N=none
- ⑫ **Protection Class**: W=IP67M, N=IP66

Send this order form to info@techome.com.au or call us +61 (0)7 3297 9797