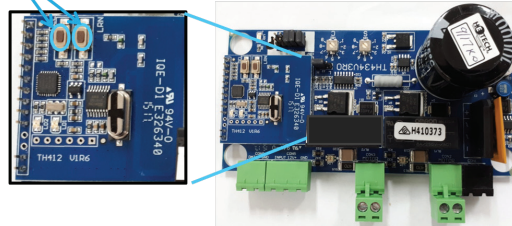


DELETING ALL REMOTES

1. Press and hold both 'DEL' and 'LRN' buttons on the receiver. ('DEL' button needs to be pressed first).

2. Hold both buttons, the LED light 'LD2' will flash for 10 secs.

3. When the receiver has completed deleting the remotes, both LED lights, 'LD1' and 'LD2' will stay lit for 2-3 secs.

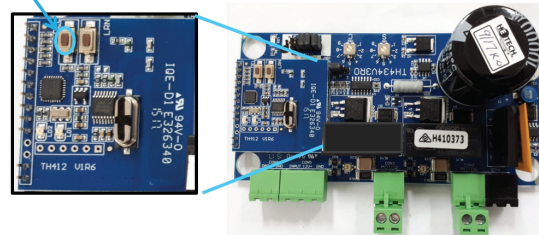


DELETE INDIVIDUAL REMOTES

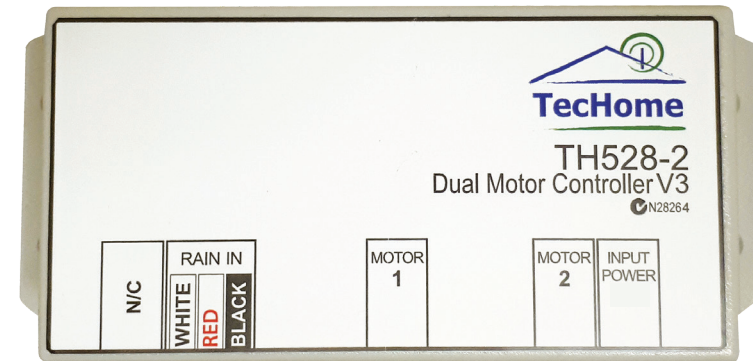
1. Press the 'DEL' button on the receiver, LED light 'LD2' will light up.

2. Press any button on the remote to be deleted and 'LD2' will flash fast.

3. Once the remote has been deleted, 'LD2' will stop flashing.

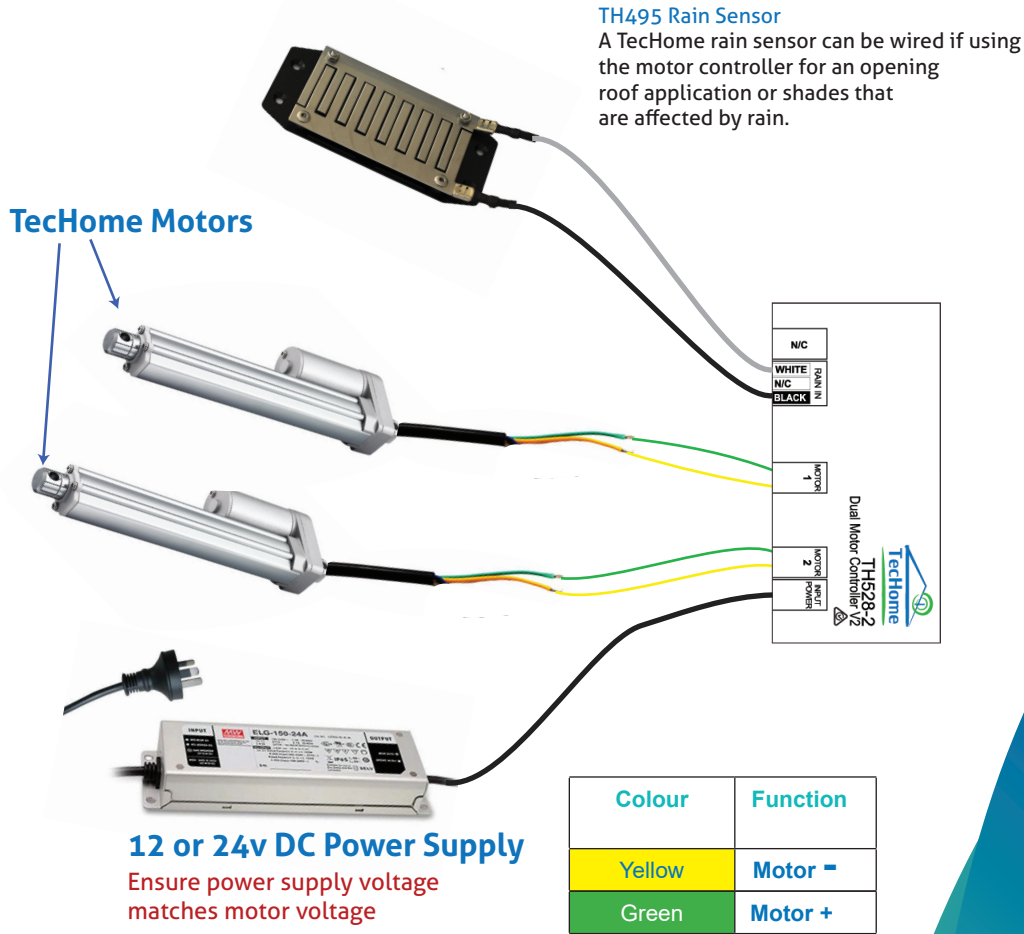


TWO CHANNEL MOTOR CONTROLLERS (TH528 & TH548)



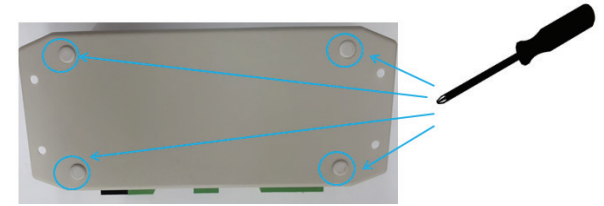
INSTALLATION AND INSTRUCTION MANUAL

WIRING MOTORS AND POWER

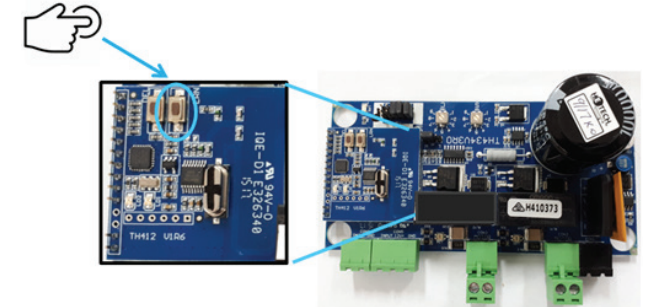


LEARN A NEW REMOTE

1. Open the enclosure of the motor controller by removing the rubber feet and remove the screws. Carefully remove the board.



2. With the power on, Press the "LRN" button on the square circuit board. A red light will begin flashing to indicate learning mode is enabled (this will timeout after 30 secs).



3. While on Ch1, Press "Open" on the remote you wish to learn. ("UP" for the slimline or "1" on the keyfob).



The red light will flash rapidly to indicate a successful pairing